



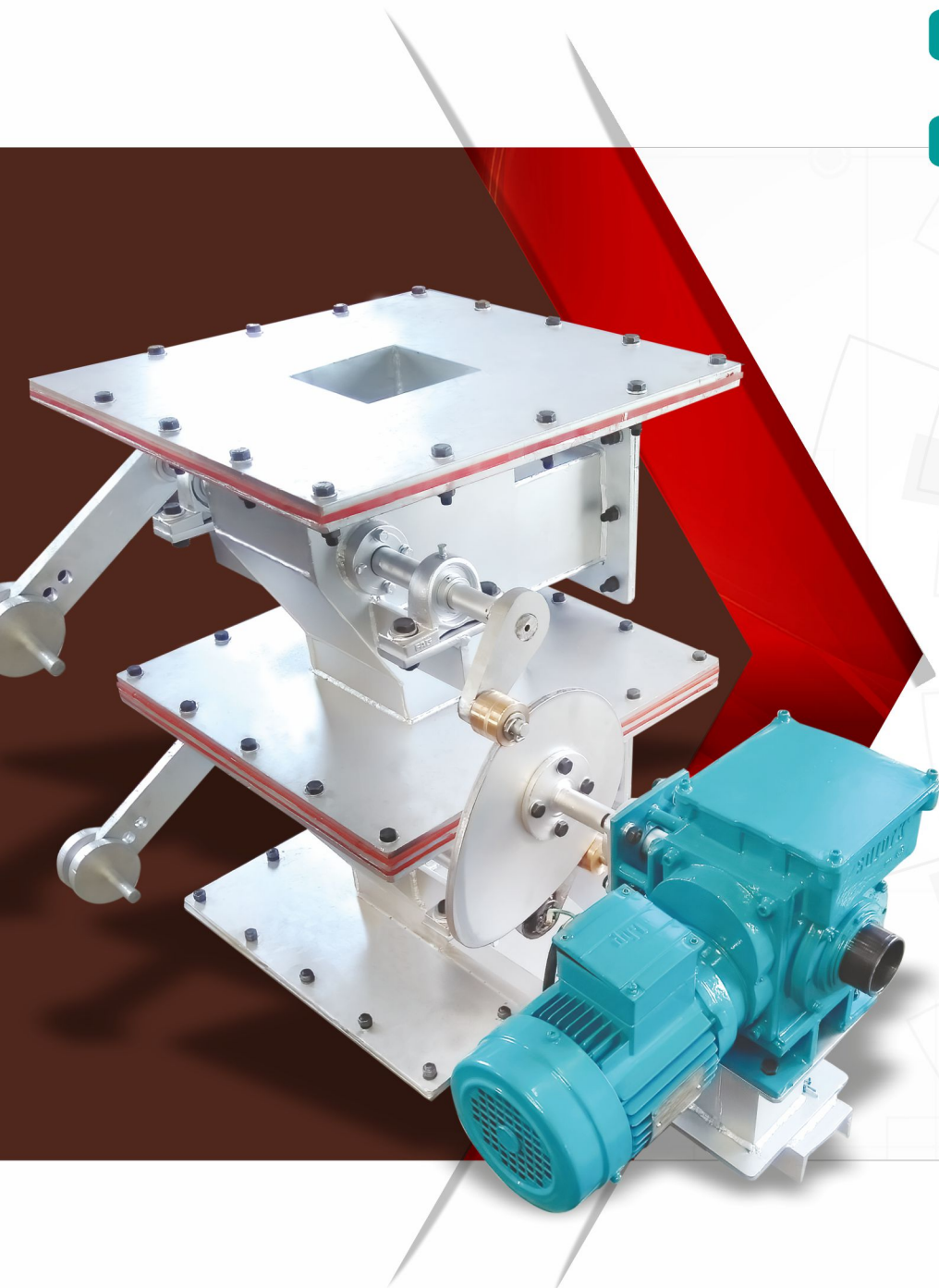
## 1913 Series Elevating Material Handling Excellence

1913 DFFG Series

Double Flap Flap Gate

1913 SFFG Series

Single Flap Flap Gate



## 1913 Series

### Elevating Material Handling Excellence

Welcome to the SUDE Series 1913, your gateway to innovative solutions for efficient material handling. In this catalogue, we introduce the cutting-edge 1913-DFFG and 1913-SFFG, designed to meet the diverse industrial needs of various sectors, including agriculture, food processing, mining, and bulk material handling.



### Embracing Excellence : Series 1913

The Series 1913-DFFG and 1913-SFFG stand as advanced solutions for efficient material handling, revolutionizing industrial processes. Known by various names, including Double Flap Valves or Double Flap Gates, Pendulum Valves, these valves are pivotal components in bulk material handling applications.

### Efficient Material Discharge | Double Flap Flat Gate

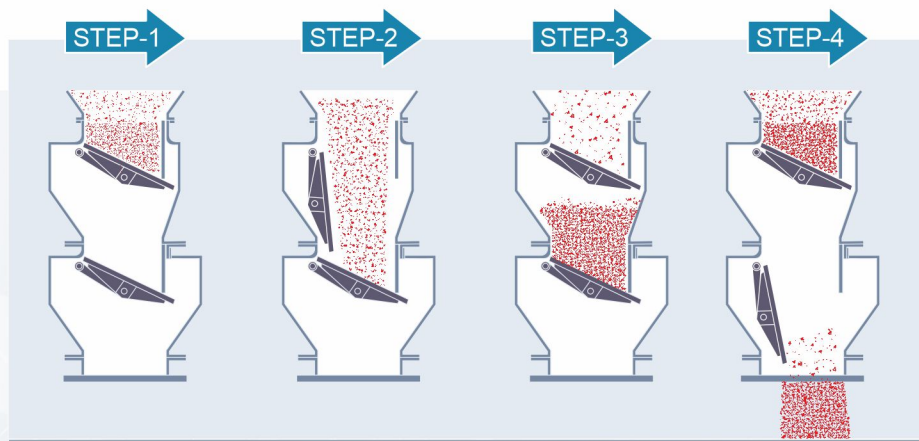
Primarily used for the efficient discharge of chunks, pellets, granules, and fibrous bulk materials, these valves operate under positive or negative pressure conditions. They serve a dual purpose – discharging material and acting as an airlock transition point to maintain pressure differentials.

These valves are particularly well-suited for handling bulky or abrasive materials, preventing jamming or damage to Rotary Feeders.

## Precision Operation | Double Flap Flap Gate

Double dump valves feature two trap-door flap plates, working in alternating cycles to ensure consistent material discharge while maintaining a positive seal. The top gate opens to release material onto the bottom gate, which then closes to prevent air leakage above the valve.

Subsequently, the bottom gate opens to allow material passage through the valve, followed by closure to prevent air leakage below the valve. This cycle ensures a steady material flow.



## Automation at its Best

Each flap plate is equipped with a pneumatically operated cylinder and solenoid valve. The timing of the valve operation is precisely controlled by an electronic signal, resulting in first-class automation with a sequential controller.

In case of motorised flap gate operation speed can be precisely control through VFD as per process demand.

Proximity Sensors and Limit Switches enhance control and automation. Proximity sensors and limit switches that monitor flap positions and provide valuable feedback to control system for seamless operation.

## Customisable Solutions: Size and Shape

Our Series 1913-DFFG and 1913-SFFG offer versatility in both size and shape. Available in sizes ranging from 100 mm to 1500 mm, these valves are adaptable to your unique requirements, offered in round, square, and rectangular shapes, ensuring compatibility with various material handling systems.

## Sealing Perfection: Tailored for Your Needs

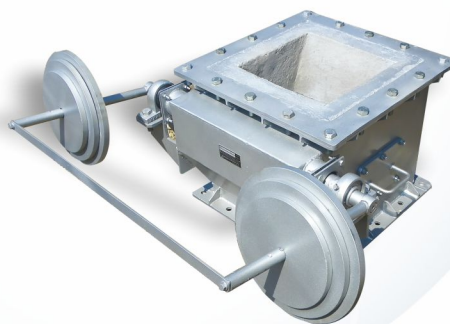
We understand the significance of sealing integrity. Our Double Flap Valves are engineered to provide 100% leak-tight sealing. Choose from a wide range of sealing materials to meet the specific demands of your application.



## Diverse Operation Mechanisms

1913 SERIES Flap Gate can be operated through various mechanisms, ensuring seamless integration into your material handling system:

1. **Manual Operation** : For hands-on control, use manual operation, allowing adjustments through handwheels, levers, chains, or cranks.

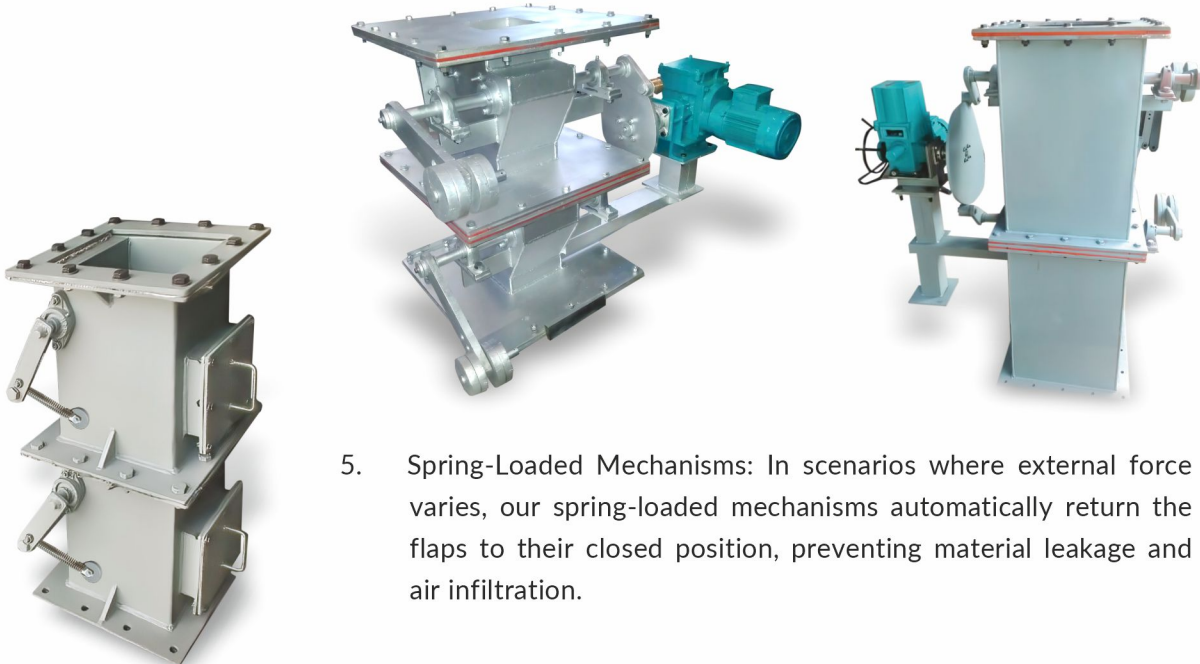


2. **Pneumatic Actuation** : When rapid or remote control is essential, opt for pneumatic actuation powered by compressed air, ensuring precision and convenience.

3. **Hydraulic Actuation** : For high-force applications, our valves can be integrated with hydraulic systems, using pressurized hydraulic fluid for operation.

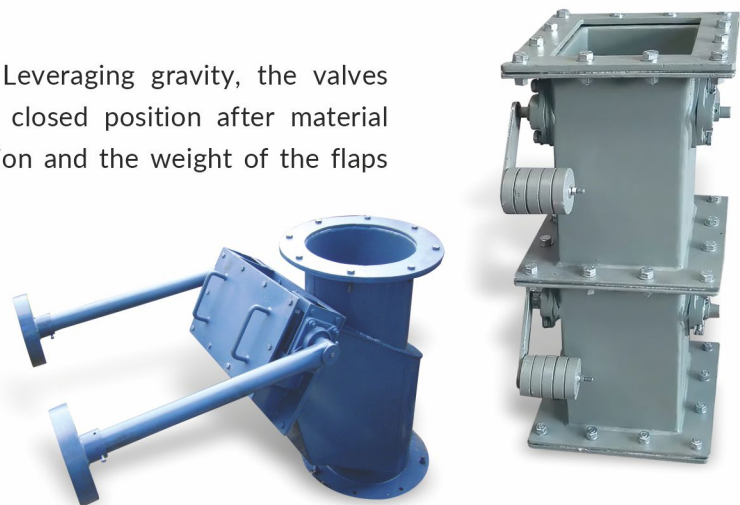


4. Electric Actuation : When automation and precise positioning are critical, electric actuators come into play, making your material handling process efficient and reliable.



5. Spring-Loaded Mechanisms: In scenarios where external force varies, our spring-loaded mechanisms automatically return the flaps to their closed position, preventing material leakage and air infiltration.

6. Counterweight/Gravity Operation: Leveraging gravity, the valves naturally return the flaps to their closed position after material passage, with the angle of installation and the weight of the flaps playing crucial roles.



## Diverse Applications

SUDE Double Flap and Single Flap Flap Gate are ideal for material handling systems, particularly in batch processing. These valves excel at the controlled discharge of various materials, including clinker and abrasive dust. They are commonly installed below slide gates and hoppers and can accommodate a wide temperature range, from -25°C to 650°C. With refractory lining, the temperature range can be extended up to 1050°C.

## Key Specifications

1. Sizes Available: 100 mm to 1500 mm (Round, Square & Rectangular Shape)
2. Sealing Materials: A wide range of options for leak-tight sealing
3. Temperature Range: -25°C to 650°C & with refractory lining up to 1050°C



## In Summary:

The Series 1913-DFFG and 1913-SFFG are the epitome of versatility, reliability, and meticulous design, tailored to meet your industrial material handling needs. With a wide range of sizes, sealing options, and operation mechanisms, these valves provide secure, efficient, and leak-tight material flow control in agriculture, food processing, mining, or bulk material handling industries. Discover the power of tailored solutions, enhancing your operations for maximum productivity.

## Model De-Codification

**SU-1913 / TYPE / SIZE / BODY / FLAP / SEAT / OPERATOR / ACCESSORIES**

Series : SU-1913

Type : DFFG - Double Flap Flap Gate  
SFFG - Single Flap Flap Gate

Size : Round, Rectangular, Square

Body : MOC - Thickness

Flap : MOC - Thickness

Seat : MOC - Thickness

Operator : Pneumatic, Motorised, Counter Weight, Spring, Hydraulic, Manual

Accessories : Limit Switches, Proximity Switches, Solenoid Valve, VFD, Sequential Controller, etc.

*Your Success is Our Commitment.*



Pune Office & Factory

**SUDE ENGINEERING PRIVATE LIMITED**



### Bangalore Works :

Plot Number 67 & 68, Near Government ITI college,  
Magadi Road , Seegehalli, BMTD Depot Road,  
Bangalore 560112.  
Tel. : +91 80 2330 2145 / 2314 1104 / 2340 2297  
Fax : +91-80-23305729  
Cell : +91 9845018216  
E-mail : sudeengg@gmail.com

### Pune Office / Works :

Gat No. 94/2, Plot No.2, Alandi Markal Road,  
Village - Dhanore, Tal - Khed, Pune 412105.  
Maharashtra, India  
Tel. :+91 9763719689, 9763719690  
Cell :+91 9822980003, 9845018216  
Email : scpl@sdtork.com

[www.sudeengg.com](http://www.sudeengg.com) | [www.sdtork.com](http://www.sdtork.com)



[www.sudeengg.com](http://www.sudeengg.com)